



Today's Triumphs Are Built On Past Achievements And Mark Beginning Of Still Greater Things To Come.

The Establishment Of A
BRANCH BANK
Of The
Manchester Trust Co.

In The North End

Marks The Beginning Of A New Business Era In That Section Of Town.

Its benefits to industry, retail business and individuals alike will be of untold value in added community service.

Our congratulations to the officers and directors of The Manchester Trust Co., for their foresight and community interest.

Lydall & Foulds Paper Co.
The Colonial Board Co.
The Manchester Water Co.



A Hearty Handshake
And Our Sincere Congratulations to the
MANCHESTER TRUST COMPANY
On Their Opening of A Branch
in the North End of Town

It is always a pleasant occasion when friends move into the neighborhood, and in the opening of this new branch, we feel we are welcoming an old friend. We know too, that our new neighbor will also benefit business, industry and individuals through its many services.

G. E. WILLIS & SON
INCORPORATED
● COAL ● LUMBER ● MASON SUPPLIES ● OIL
2 MAIN STREET TELEPHONE 5125

MEMO
For TODAY....
The Manchester Trust Company
Starts Construction Of Branch Bank In The North End!

Yes, indeed, this is a significant day in the history of the North End.

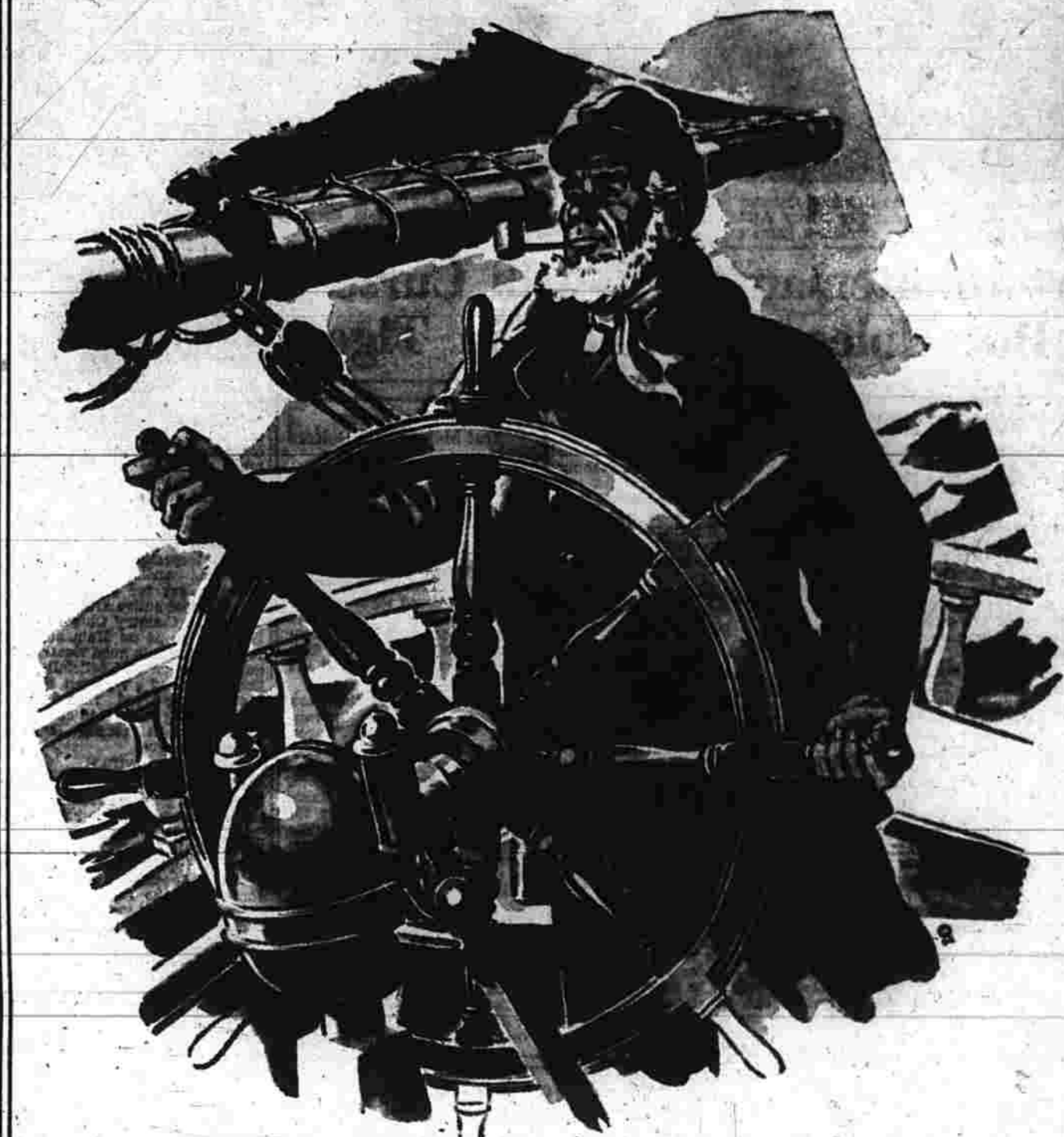
It brings a much needed service to this part of the town for industry, retail business and every individual who has banking business to transact.

This Branch Bank will not only serve business and individuals but prove a great convenience to a large and growing section of town.

Our Congratulations
To The
Manchester Trust Company

The W. G. Glenney Co.
COAL, LUMBER, MASON'S SUPPLIES, PAINT AND HARDWARE, FUEL OIL
336 NORTH MAIN STREET MANCHESTER

To Bring A Ship Along A Chosen Course To Safe Harbor Requires Good Seamanship, An Experienced Captain And Sound Planning.



We Congratulate The Officers And Directors of The
Manchester Trust Company

On Their Sound Planning and Good Judgment In Establishing A
BRANCH BANK
In The North End

It will be of great value to Business and Individuals in all their banking requirements . . . and a great asset to the North End.

C. R. BURR CO.
NURSERIES
119 OAKLAND STREET MANCHESTER

Safe the Empire Stars

Headmaster Ed Rogers of Monson Academy, a local man, phones with good word for the Monson team...

Art Houtteman Back with Curse But Holes Still Show in Tigers

Lakeland, Fla.—(NEA)—Charley Gehring is just getting acquainted with the Detroit personnel...

Good Weather Brings Out Many Local Golfers

Excellent weather over the week end brought out the drivers, spouses, managers...

Starts With Six-Game Struggle

With Houtteman, the pitcher, starting on the six-game struggle...

Wanted: Foreign Stars with White Sox and Yanks

White Sox and Yanks Hot After Fielder Berra Returns to Wars And Gets Home Run; Cincinnati Reds Get Sixth Straight Win

Wilmington, N. C., March 31.—Last year when they were handing out the prize money in the Amateur Open Golf Tournament...

Casey at the Bat Last Season Was a Crucial One In Long History of Bombers

Casey Stengel, claims to have been the only left-handed batted student in the history of the West Side High School...

Leo Announces Williams Will Be Second Baseman

Los Angeles, March 31.—"I've played in four minor league clubs and the record shows I've hit under .260..."

McMillin, Former Grid Coach, Dies

Bloomington, Ind., March 31.—Alvin N. (Boo) McMillin, 67, died of a heart attack...

Notice GUS'S SANDWICH SHOP FORMERLY DON'S

Our Phone Number Has Been Changed... From 2-8169 To 2-8132

GREYHOUND LINES A Sign to Go By

GREYHOUND LINES A Sign to Go By. Machine Spread, Work Guaranteed, Free Estimates, Experience Since 1920.

AMESITE DRIVEWAY SAVE 10% BY CALLING NOW

AMESITE DRIVEWAY SAVE 10% BY CALLING NOW. MACHINE SPREAD, WORK GUARANTEED, FREE ESTIMATES, EXPERIENCE SINCE 1920.

ARONSON & BRACE. 2-2022

Conducts Clinics

Presentations of trophies and awards by the West Side Recreation Commission...

Leo Announces Williams Will Be Second Baseman

Los Angeles, March 31.—"I've played in four minor league clubs and the record shows I've hit under .260..."

McMillin, Former Grid Coach, Dies

Bloomington, Ind., March 31.—Alvin N. (Boo) McMillin, 67, died of a heart attack...

Notice GUS'S SANDWICH SHOP FORMERLY DON'S

Our Phone Number Has Been Changed... From 2-8169 To 2-8132

GREYHOUND LINES A Sign to Go By

GREYHOUND LINES A Sign to Go By. Machine Spread, Work Guaranteed, Free Estimates, Experience Since 1920.

AMESITE DRIVEWAY SAVE 10% BY CALLING NOW

AMESITE DRIVEWAY SAVE 10% BY CALLING NOW. MACHINE SPREAD, WORK GUARANTEED, FREE ESTIMATES, EXPERIENCE SINCE 1920.

LaSalle Must Stop Kansas Giant in Garden Tonight

New York, March 31.—LaSalle's youthful Rapid team are confronted with the Hercules team...

ARONSON & BRACE. 2-2022

Top Brown & Beaupre By 65 to 56 Score

Jim Hagazzo Pours in 26 Points to Pace Attack; Also Gains Most Valuable Award

Local Sport Chatter

Annual Banquet of the Central Connecticut State University Basketball Officials...

McMillin, Former Grid Coach, Dies

Bloomington, Ind., March 31.—Alvin N. (Boo) McMillin, 67, died of a heart attack...

Notice GUS'S SANDWICH SHOP FORMERLY DON'S

Our Phone Number Has Been Changed... From 2-8169 To 2-8132

GREYHOUND LINES A Sign to Go By

GREYHOUND LINES A Sign to Go By. Machine Spread, Work Guaranteed, Free Estimates, Experience Since 1920.

AMESITE DRIVEWAY SAVE 10% BY CALLING NOW

AMESITE DRIVEWAY SAVE 10% BY CALLING NOW. MACHINE SPREAD, WORK GUARANTEED, FREE ESTIMATES, EXPERIENCE SINCE 1920.

LaSalle Must Stop Kansas Giant in Garden Tonight

New York, March 31.—LaSalle's youthful Rapid team are confronted with the Hercules team...

ARONSON & BRACE. 2-2022

Used Cars. TAKE UP TO 18 MONTHS TO PAY. 1949 MERCURY 4-DOOR SEDAN \$1495. 1951 CHEVROLET STYLELINE DELUXE \$1695. 1951 CHEVROLET STYLELINE SPECIAL \$1745. 1951 PLYMOUTH CAMBRIDGE \$1695. 1949 MERCURY SPORT SEDAN \$1495. 1951 CHEVROLET STYLELINE DELUXE \$1695. 1951 PLYMOUTH CRANBROOK \$1695. 1949 MERCURY CLUB COUPE \$2295. 1951 MERCURY SPORT SEDAN \$2295. 1949 OLDSMOBILE '88' \$1545. 1949 PACKARD 2-DOOR SEDAN \$1395. 1949 BUICK SUPER SEDANETTE \$1495. 1950 MERCURY 4-DOOR SEDAN \$1795.

Automotive Parts Jobber Needs Counterman. Paid vacation and holidays. Sick leave, life insurance, Blue Cross available. 46 hours weekly. Time and one-half for time over 40 hours. WRITE BOX Z HERALD. WE HAVE THE LATEST In Decorating, Color Schemes and Wallpapering. See Our Selected Combinations of Wallpaper Paneling. Custom Made Drapes. Samples Showing Full Patterns. Expert Advice—No Obligation. ARONSON & BRACE. Telephone 2-2022

AMESITE DRIVEWAY. SAVE 10% BY CALLING NOW. MACHINE SPREAD, WORK GUARANTEED, FREE ESTIMATES, EXPERIENCE SINCE 1920. 468 HARTFORD ROAD. CALL 2-8132. GREYHOUND LINES. A Sign to Go By. AMESITE DRIVEWAY. SAVE 10% BY CALLING NOW. MACHINE SPREAD, WORK GUARANTEED, FREE ESTIMATES, EXPERIENCE SINCE 1920. 468 HARTFORD ROAD. CALL 2-8132. GREYHOUND LINES. A Sign to Go By.

Everyone's talking about the EDGE. SHOW DOWN PLAN for proof. SOLIMENE. INCORPORATED. 634 CENTER ST. MANCHESTER. GLENNEY'S. 789 MAIN ST.

Raymond E. Gorman Insurance Agency. Fire - Auto - Life. 983 Main St., Tel. 6460. CINCO. ALL ALUMINUM COMBINATION STORM SASH AND SCREENS COMBINATION DOORS PORCHES. EXPERIENCE AND QUALITY SINCE 1845. LaSalle Must Stop Kansas Giant in Garden Tonight. New York, March 31.—LaSalle's youthful Rapid team are confronted with the Hercules team...

YOUR PRESCRIPTIONS Exactly Filled. Into each prescription goes the experience and know-how of our registered pharmacist, plus only the finest drugs. Sick Room Supplies. Prescriptions Called For and Delivered. PINE PHARMACY. FREE DELIVERY. 664 Center St. Telephone 2-9095. CINCOS DISTRIBUTORS. 10 Spencer Court, East Hartford. Tel. 9-2669 or 8-4481.

About Town

The son born at the Manchester Memorial Hospital on March 27 to Mr. and Mrs. Louis Schadlich of 14 M Garden drive has been named Thomas Payne. Mrs. Schadlich is the former Nancy Payne, daughter of Mr. and Mrs. Wallace G. Payne, and Mr. Schadlich is the son of Mr. and Mrs. Louis M. Schadlich.

The Little Flower of Jesus Mothers Circle will meet Wednesday evening at 8 o'clock at the home of Mrs. Carl Traut, 1000 Middle turnpike west.

The Beethoven Glee will rehearse tonight at 8 o'clock at the Emanuel Lutheran Church in preparation for the concert to be given in North Stonington on April 20.

The election of officers for the coming year will take place at the meeting of Gibbons Assembly, Catholic Ladies of Columbus tomorrow night at 8 o'clock at the Knights of Columbus Home.

A meeting of the Edgar group of the South Methodist WSCS will be held tomorrow evening at 7:30 at the church.

The Lillian Gertrude Grant Expression Club donated some of the prizes awarded Saturday to the contestants in the 15th annual state American Legion Oratorical contest held at the State Capitol.

A son was born on March 28 at the St. Francis Hospital to Mr. and Mrs. Henry Haef of 4 Edgerton street, and one was born on March 27 at the Hartford Hospital to Mr. and Mrs. George Smith, RFD 1, Rockville.

The University of Connecticut Band will present a concert tomorrow evening in the Rockville High School auditorium which will be open to the general public at a moderate admission fee.

The Salvation Army Friendship Circle will meet this evening at 7:30 at the home of Mrs. Frank Duncan, 9 Little street.

The public is invited to attend the testimonial dinner dance and banquet of the Young Democratic Club of Manchester to be held at the Rainbow Inn on April 19. Tickets are available from any member of the committee.

Richard A. Eddy of 25 Deepwood drive has been named to the dean's list for the fall semester at Middlebury College, Middlebury, Vt.

Manchester Lodge No. 73, A.F. and A.M., will hold a special communication at the Masonic Temple tomorrow evening at 7:30. The Entered Apprentice Degree will be conferred on a class of candidates with junior warden, John L. Von Deck in charge of the work. There will be a social hour and refreshments at the conclusion of the degree work.

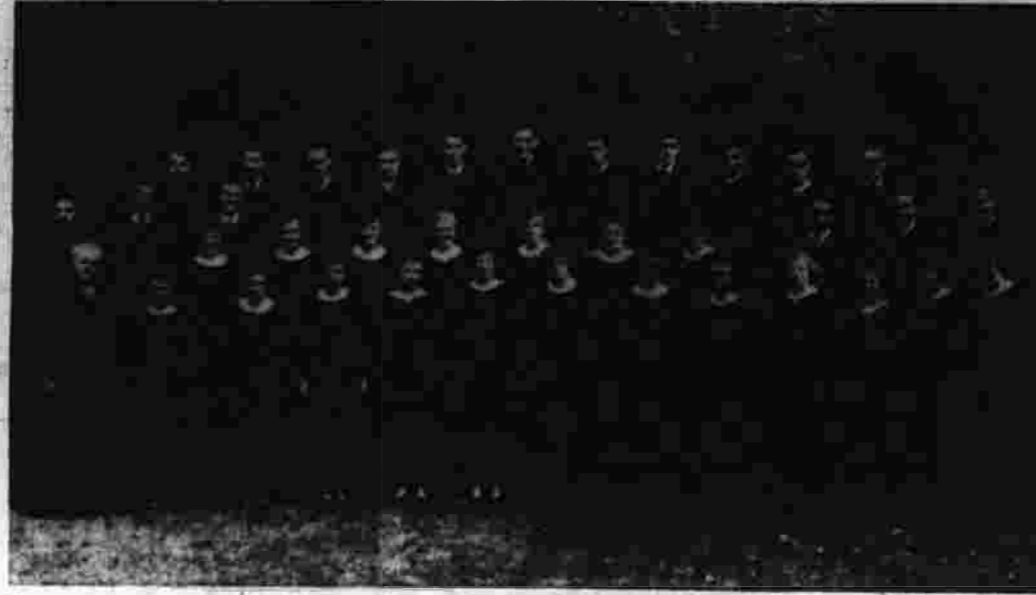
St. Jude Thaddeus' Mothers Circle will meet at the home of Mrs. Herbert Carvey, 55 Scarborough road, Wednesday night at 8:15.

St. Raymond's Mothers Circle will meet at the home of Mrs. Donald Jorgensen, 5 Tyler circle, tomorrow evening at 8 o'clock.

Mrs. Lee J. Deller, music teacher in Manchester schools, will again be on the staff at Camp Jewell, West Swanzee, N. H., this summer. Camp Jewell, the Hartford YMCA camp, will celebrate its 50th anniversary of camping this summer.

The Holy Innocents Mothers Circle will meet Wednesday at 8 at the home of Mrs. William C. Marsh, 359 Middle turnpike east. Tomorrow evening at the same hour the Infant Jesus of Prague Mothers' Circle will meet with Mrs. Wilfred Paquette, Jr., of 141 Deepwood drive.

Present Concert Tonight at Nazarene Church



The A Cappella Choir of Eastern Nazarene College, Wollaston, Mass., will present a concert of sacred music tonight at 7:45 at the Church of the Nazarene, 466 Main street. The choir is making an extended two week tour presenting programs in many large cities in seven different states and Canada. The choir of 40 voices is under the direction of Mrs. Esther D. Williamson, professor of voice. The Crusader Male Quartet will render several selections during the program. Rev. Kenneth Pearsall, executive field secretary of the college, will accompany the choir and speak during the intermission. The program will include many favorite A Cappella selections, well-known and much-loved hymns and a group of Negro spirituals. A cordial invitation is extended to all.

Today Marks Close Of Essay Contest

Today marks the closing date for the local essay contest being sponsored for high school seniors eligible to enter college in the fall by Mantonomah Tribe No. 58 and the Lakota and Sunset councils of the Degree of Pochontas of the national Improved Order of Red Men. The local contest is being held in conjunction with a national competition sponsored annually by the Red Men. The essays were to have been between 1,000 and 1,500 words long and the subject on which they were to have been written is "Freedom, My Right, Privilege, Duties and Obligations." The tribe

Sees Approval Of Test Rate

North End Water Rates Of Past Year May Be Voted, PUC Man Says

Rates charged by the privately owned Manchester Water Company under its recently installed meter system during a 12-month test period appeared today to be the rates that will be confirmed by the Public Utilities Commission. Francis J. Duchelle, director of accounting of the PUC staff, said today that the experience of the company in the water consumption of its customers during the test period has been almost exactly as estimated, and "it seems as if the rates will be confirmed." The company, which serves about 2,200 customers in the North End, was directed by the PUC to charge customers on the basis of an estimated use of 13,000 gallons per family yearly in order to provide the company with approximately the same return it made under the flat rate formerly charged. Duchelle said that consumption of a single family has been 13,045 gallons. In 1949, at the time that the

company first petitioned the PUC for permission to change to meter billing from its old flat-rate system, it was making a return on its plant investment of 3.15 per cent. The PUC staff, which has been analyzing the water consumption records of the company's customers and the report of its operations during the test period, discussed its findings on Friday with officials of the company and Attorney John D. LaBelle, who is representing a group of North End residents who are customers of the company. Duchelle said that the staff has now completed its analysis and is working on its report to the commission. Under the rates that have been in effect since the PUC ordered the company to proceed with installing meters in April, 1950, the average home pays a quarterly bill of between \$3 and \$3.60, depending on the size of the meter, for the first 4,500 gallons.

PLASTERING
Raymond D. McCarthy
Tel. Manchester 3097
Read Herald Advs.

POODLE CUT! POODLE CUT!
Regularly \$1.50
SPECIAL \$1.00
with the purchase of any home permanent refill.
Limited Time Only.
JAMES'
143 Main St.—Tel. 2-7701

WANTED RUBBER MILL OPERATOR
WILL TRAIN ALSO SERVICE MAN APPLY IN PERSON
SPENCER RUBBER PRODUCTS
CHAPEL STREET

LAND SURVEYING and CIVIL ENGINEERING
Edward L. Davis, Jr.
Registered Civil Engineer and Land Surveyor
15 Proctor Road, Manchester
Tel. 7019

PRIVATE LESSONS
• GUITAR
• MANDOLIN
• VIOLIN
BRUNO DUBALDO
Telephone 6802 or 2-3700

WILLIAMS OIL SERVICE
341 BROAD ST.
FUEL AND RANGE OIL
* * *
OIL HEATING EQUIPMENT
Estimates On Request
CALL 2-1257

SALE!
Odora-Whitmor GARMENT BAGS

Reg. \$1.98. Jumbo size, 16 garment.	\$1.69
Reg. \$1.79. Regular size, 8 garment.	\$1.59
Reg. \$1.69. Suit size.	\$1.49

Heavy quality solid color plastic garment bags with quilted fronts, and full length zipper. Rose, blue, green.
Matching 12 pocket quilted shoe bags. Special \$1.49.
Blanket bags with quilted front. Zippered. Special \$1.00.

The J.W. HALE co. MANCHESTER CONN.
Green Stamps Given With Cash Sales

A Basket Full Of PRETTY PRINTS

See how print can add a fresh and flirty air to flattering, full-skirted dresses... how print can give smart individuality to daytime ensembles... how print can truly capture the lifting mood of spring and your own love for wearing pretty, most becoming fashions.

\$6.98 to \$13.98

GIRLS' COATS

Navy—Wool with white collars, also check taffeta trim.
Rayon Checks—Brown and white.
Navy Bengaline—Duster style, lined with rose satin.
Toppers—Red, Navy, Gold, Gabardine, Orchid, Gray, Red.

**Sizes 7 to 14
Pre Teen 10 to 14**

\$10.98 to \$25.00

The J.W. HALE co. MANCHESTER CONN.
Green Stamps Given With Cash Sales

36" Everglaze CHINTZ
at especially low prices
PLAIN COLORS 79c yard
PRINTS 99c yard

You will find dozens of uses for this wonderful Chintz in both plain colors and printed designs. All colors permanent Everglaze finish.

Green Stamps Given With Cash Sales.

The J.W. HALE co. MANCHESTER CONN.

Trying for that trip to Paris?
Send in your entry blank now for McCall's "Easter Parade Fashion Contest."
P.S. This suit suggestion is perfect for any Easter Parade idea.

\$1.98 to \$3.69 yd.

McCall's 8928

here it is! The SUIT you can actually make in **3** hours!

And that's not a mere guess... the fashion editors of Better Living Magazine tested the making of this gay suit and they insist anyone who sews can make it in three hours! Just try it and see for yourself... start of a morning... wear your suit to town that very afternoon! Make it as you see it in March Better Living Magazine of Baulings, woolsens, wool and rayon or all rayon fabric.